



**MERCI**

Merry Christmas Tutorial Gift  
by DANA (2013)

## SUPPLIES NEEDED

### Assembly SUPPLY PHOTO

(Tacky Glue, cotton ball, doll stand, white florist tape, stiff pipecleaners, thin pipecleaner gauze).

### SHOE SUPPLY

(small vintage netting, size 13 or 15 seed beads). Nail polish as desired.

### DECORATION PHOTO

(assortment of rhinestones, pearls, gold beads, flocking, thin and med gold wire, plus metallic pull trim).

### WIGGING PHOTO

(gold viscose, matching DMC floss, tapestry needle).

### Material PHOTO

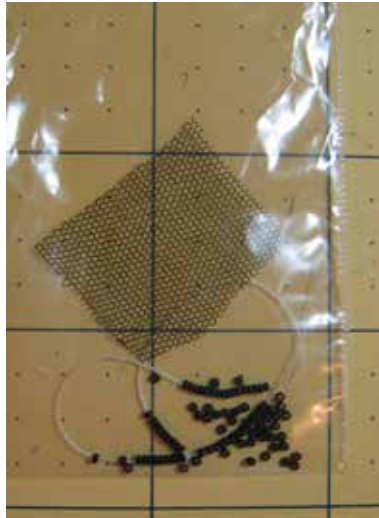
Red Cottonteen, white faux fur, gold screen printed cotton, batiste.

Then basic Tool Supplies.

-----  
**\*\*NOTE\*\***

**I have 5 full doll kit/material kits for sale \$50. IF you are interested in one - please email me personally at [Dana@Miniatureart.com](mailto:Dana@Miniatureart.com)**

**I ONLY HAVE 5 made up - and include everything seen in supply photos and beautiful painted doll as well.**



# MERCI Tutorial

## Step 1 - BOOTS

1. Paint boots with red fingernail polish. When dry, paint two light coats over top with FLAT nail polish top coat (I get mine at Walgreens). This takes away the high shine. Then let shoe dry.

2. Next take a thin nail polish liner brush (used for nail art decoration) and draw line down front. Also paint soles and heels. When dry, cut two small strips of faux fur and line around top of boot for \*cuff\*. I \*ROLL\* my cuff slightly to make it look more realistic.

3. Cut small strip of vintage cotton netting (lace makes an excellent source) and glue down front of boot to resemble lacing.

**\*\*NOTE\*\*** to make your faux fur look more real (texture) ... take a toothpick and add dots of glue. Sprinkle flocking on these dots of glue to fill in any material background that might show.

4. Glue tiny sized 13 or 15 seed beads down front of shoe for buttons.

When Glue is dry, coat entire shoe (minus fur of course) with flat clear nail polish. This keeps the beads, netting permanently attached.

-----  
**\*\*HINT\*\*** to keep your beads from rolling around - I pour on top of sponges.



## Step 2 - ASSEMBLY

(remember to keep arms off until a bit later).

1. Take small plastic baggie and place over dolls head. Wrap thread around neck to hold in place. This will protect her pretty face from glue, fingers and other disasters.

2. Take 3 stiff pipecleaners (NOT LIMPY CRAFT pipecleaners) and twist together to form one strand. Bend in half.

3. Now coat the inside of the torso hole with Aliens Original Tacky Glue. Then put a few drops of zap a gap (gel superglue in place). Insert the pipecleaner into torso and let dry.

4. Carefully measure doll so she is 5 3/4" tall. Cutting off any excess pipecleaner so legs fit to desired doll height.

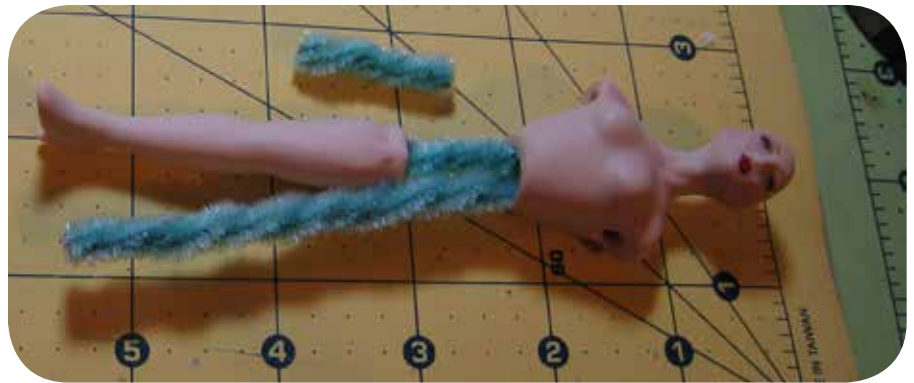
5. Wrap small amount of cotton gauze around her hips/butt to cover pipecleaners.

*THE GOAL ... is not to provide BULK with the doll. BUT to blend the transition of porcelain pieces to pipecleaner armature.*

*IF you are careful - the doll will stand on its own two feet. If not - simply insert the doll stand and glue.*

6. Cut small rectangle out of white cotton for tiny slip and glue on.

7. Roll up gauze for hip rolls and glue on doll to hold out velvet skirt.



### Step 3 - Two Part Velvet Skirt

1. Cut 5" x 4 1/4" tall velveteen (cottonteen) red material. Cut 5" long piece of faux fur material.

2. Glue strip (right side up) of faux fur on top of BACKSIDE of velvet and when dry, fold over to front. This makes a nice finished fur hem.

3. Hand pleat material around waist and glue folds flat. This skirt is made to go around waist but back may be open slightly. We glue the train piece of skirt over back.

**\*\*NOTE\*\*** to get your seams to lie flat ... I use a small flat iron to press.

4. Pin, glue skirt around dolls waist and let dry. Back edge will be open.



**\*\*NOTE\*\*** to get your seams to lie flat ... I use a small flat iron to press.



**\*\*NOTE\*\*** when I hand pleat the cottonteen ... I cut the edges off in the inside for a flatter fit.



5. Cut out skirt triangle. Turn both side edges under to wrong side and glue for finished edge.

6. Then repeat \*fur\* technique for hem.

7. Pin one side edge over back of skirt where raw edge (gap) is.

8. Pull train around to front as shown.

9. Put doll on pinning board and drape as desired to \*puddle\* the material.

10. When satisfied ... spray with several LIGHT ... coats of hair spray. This will soak in ... dry and you repeat!

*IF you do it TOO HEAVY (this takes patience) it will loosen glue and flake off on red velvet UGH!@*



On the next page are various blown up photos for your draping ideas.

## DRAPING HINTS ...

You are working with a very heavy material.

The material when lying on the ground - should LOOK heavy! She is wearing a velvet gown!!

SOOooo don't get disappointed if your doll slooks MATRONLY ... not skinny twiggy.

**\*\*HINTS\*\*** after I pinned my material to my satisfaction, I glued (lightly) the triangle train down the front. THEN sprayed!

ALSO ... after spraying ... if you see pin holes ... simply take your pin and go back and forth across the top lightly and hole will disappear!

**\*\*HINT\*\*** LIGHTLY spray hem ... as in very very lightly! Otherwise the trim will literally melt off (hahah - seems like it - actually the glue loosens).

**\*\*HINT\*\*** ... work with the skirt quickly. I glue and practically drape the skirt right away. BECAUSE .... if the glue dries totally it makes the material stiff - and this won't lay nicely!!

**\*\*HINT\*\*** if you PIN the trim in place - as much as you can - instead of the velvet - you will have less holes to take away in the material.



## Step 4 - Bodice

**\*\*NOTE\*\*** there is NO pattern for the bodice - this is simply two rectangles ... one goes across her front from waist to top of chest. One goes from side seam to side seam.

*The photo shows the placement.*

1. Cut out front rectangle from paper towel to measure fit. Your bodice should have enough width to turn a small hem. This hem covers the top of the raw edge skirt.

2. Cut out back rectangle from paper towel to measure fit. You want a piece that goes from side seam to side seam. After you cut out velvet piece, make sure to turn bottom edge and both side edges under to wrong side and glue for finished edge.

**\*\*HINT\*\*** after the side edges are glued on - carefully press with your fingers to make side seams as flat as possible. MAKE SURE GLUE IS DRY or it will bleed through!

3. Before the glue dries entirely ... make sure to poke holes in the shoulder holes for the sleeves and arm pipecleaner.

**WOW! YOU are almost done!**  
Just the sleeves and then the fun decorating starts!!





## Step 5 - Sleeves

1. Take your thin pipecleaner and glue into porcelain arm.

IF you are new to this ... the best way I found .....Hold arm upright ... put in dot of tacky glue and then add a drop of zap a gap.

THEN QUICKLY spray the pipe-cleaner with zip kicker and insert into arm hole. FAST, TIGHT ... and easy!

2. Now take white florist tape and wrap several times around arm/ pipecleaner to prevent prickles from coming through material, and give a realistic bulk to arms.

3. Insert arms into torso ... and carefully bend ONCE into place to check fit/length. Then gently straighten to dress the sleeves.

4. Cut out sleeve pattern and put a line of glue at hem.

5. Glue white fur material (right sides together) at glue (hem). When dry, flip fur to back side. With red velvet side (folded in half) glue or sew side seam. Turn sleeve right side out.

6. Cut 1" square of gold material. with right sides together, cut tiny peak (if desired) at front. Turn/ glue side and front edge to wrong side for finished edge. Join sides and make tiny tube and slide on dolls arm.

7. Then insert arm into sleeve, gather top and glue into dolls shoulder. Pin and drape sleeves as desired. Lightly spray with hair-spray to keep shape.



# WIGGING

My absolutely FAVORITE part of dollmaking!! She never really comes alive until the hair comes on!

1. Do a basic wiggling cross (I have a YOUTUBE video on this - as well as extensive notes on the NEWBIE HANGOUT)

2. Gently gather the long hair into a pony tail in back.

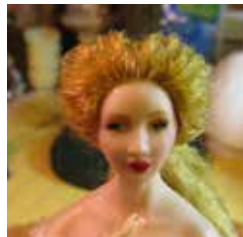
3. With a corsage pin or thick tapestry needle ... carefully \*PICK\* her hair into a higher style. When satisfied ... lightly spray with hair spray to keep shape.

4. THEN ... lightly mist long back section of hair, and wrap small sections around cocktail straws and let dry. Carefully unroll for messy long curls. Pull some tendrils forward.

5. Take another section of viscose and tie a few knots into it. Cut ends short, and glue under. Then glue this to top of her head for high bun.

Curl more tendrils, curls as desired to decorate.

I even took matching DMC floss and braided several strands to glue on for intricate braiding detail. IF you match the color just right - it actually looks like the real viscose hair!



## DECORATION

HERE is where the fun begins!  
You simply glue on beads,  
pearls, trim as you desire.

I will show you closeup photos  
of different areas that I did ...  
as well as a few large photos  
overall.

-----  
I REALLY hope you enjoyed  
this tutorial ... and would love  
if you \*LIKE\* my website in  
response so that other people  
can also download and learn  
how to make  
MERCI.

PLEASE feel free to share this  
tutorial with your friends or  
club members and as always ...

HAPPY CREATING ....  
2013

DANA

[www.miniatureart.com](http://www.miniatureart.com)

[www.minidolllist.com](http://www.minidolllist.com)

[Dana@Miniatureart.com](mailto:Dana@Miniatureart.com)

FOLLOW me on Twitter  
View my free YOUTUBE videos  
LIKE me on Facebook



Twist thin wire around  
T-pins for making  
bracelets, crowns and  
necklaces

