

Sleeping Rose

Dana of Miniature Art

Materials Needed:

- lace hankie
- silk ribbon
- tiny beads
- viscose (hair)
- dollbody w/painted shut eyes

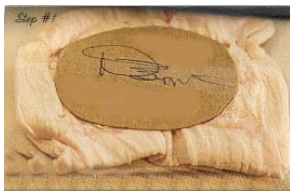
Optional Quilt Materials

- quilt fabric to match
- embroidery floss
- foam rectangle



DIRECTIONS:

1. QUILT - cut out square of foam to desired size. Cover with material, putting raw edges to back (we use the wrapping Xmas present technique <G>). Next, while glue is still tacky, squish together the quilt to make it look wrinkled like someone has slept on it. Now glue onto cardboard oval (be sure to sign oval with your name and date). Using your embroidery thread, create small quilt 'ties'. We took the needle and went through top to bottom and up again, cut off excess and tie knot, just like the quilters.



2. ASSEMBLE DOLL BODY - follow directions on doll construction sheet using pipecleaners and glue. After assembling doll, and letting glue dry, position doll on quilt (trial run) so you get an idea later on of what she'll look like.